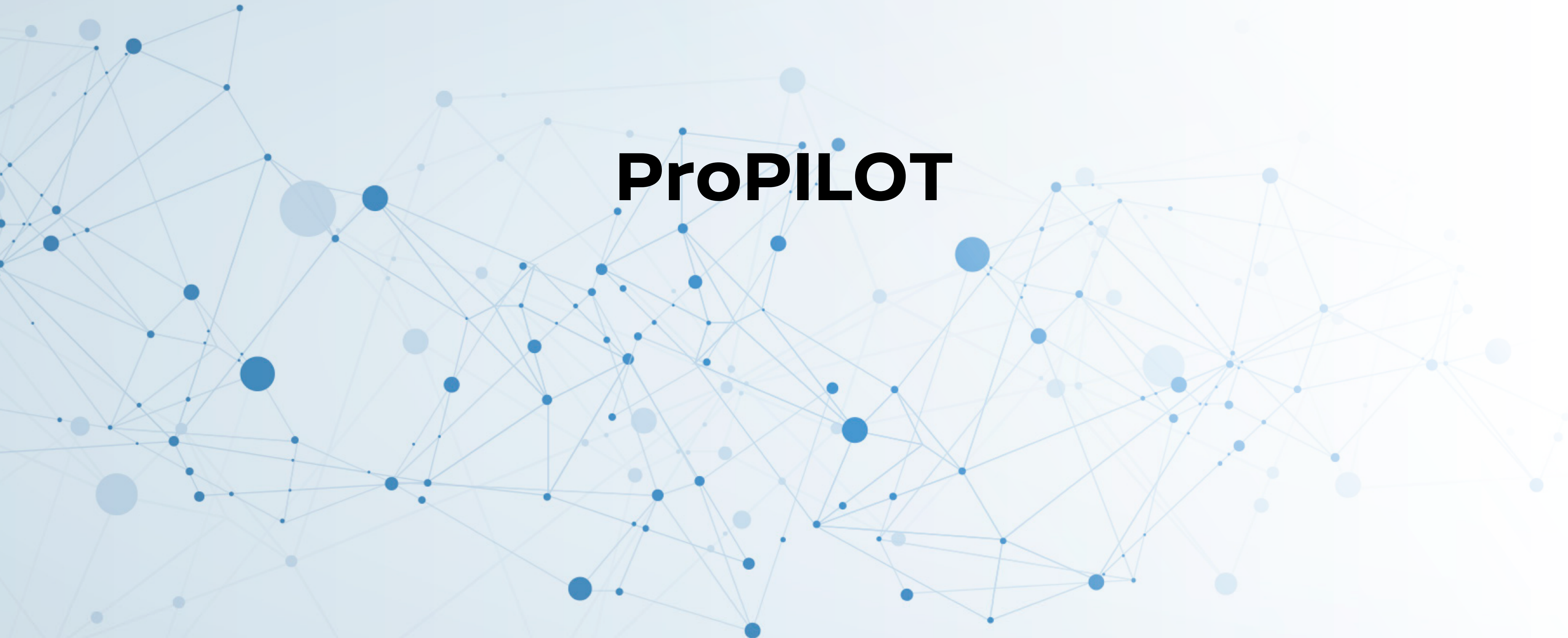


NISSAN

ProPILOT



NISSAN INTELLIGENT MOBILITY

Nissan Intelligent Mobility transforms your car into a more exciting partner by redefining how your car is driven, powered and integrated into society.

**Intelligent
Driving**

**More
Confident**

**Intelligent
Power**

**More
Excited**

**Intelligent
Integration**

**More
Connected**

NISSAN INTELLIGENT MOBILITY

Nissan Intelligent Mobility transforms your car into a more exciting partner by redefining how your car is driven, powered and integrated into society.



**Intelligent
Driving**

**More
Confident**

**Intelligent
Power**

**More
Excited**

**Intelligent
Integration**

**More
Connected**

The evolution of Nissan's driver assistance technology

- Nissan has been a pioneer of driving assistance technology, leading technological innovation for over 20 years.
- ProPILOT integrates a wide range of driver assistance technologies

Assistance technology (forward detection)

 =World-First

1999



ICC



IBA



IDC



EAP



IEB



I-FCW

2016



ProPILOT

2019



ProPILOT 2.0

Assistance technology (forward detection)



LKA



LDW



ILI



I-BSI

Assistance technology (parking)



AVM



I-AVM



I-BUI



IPA



RCTA



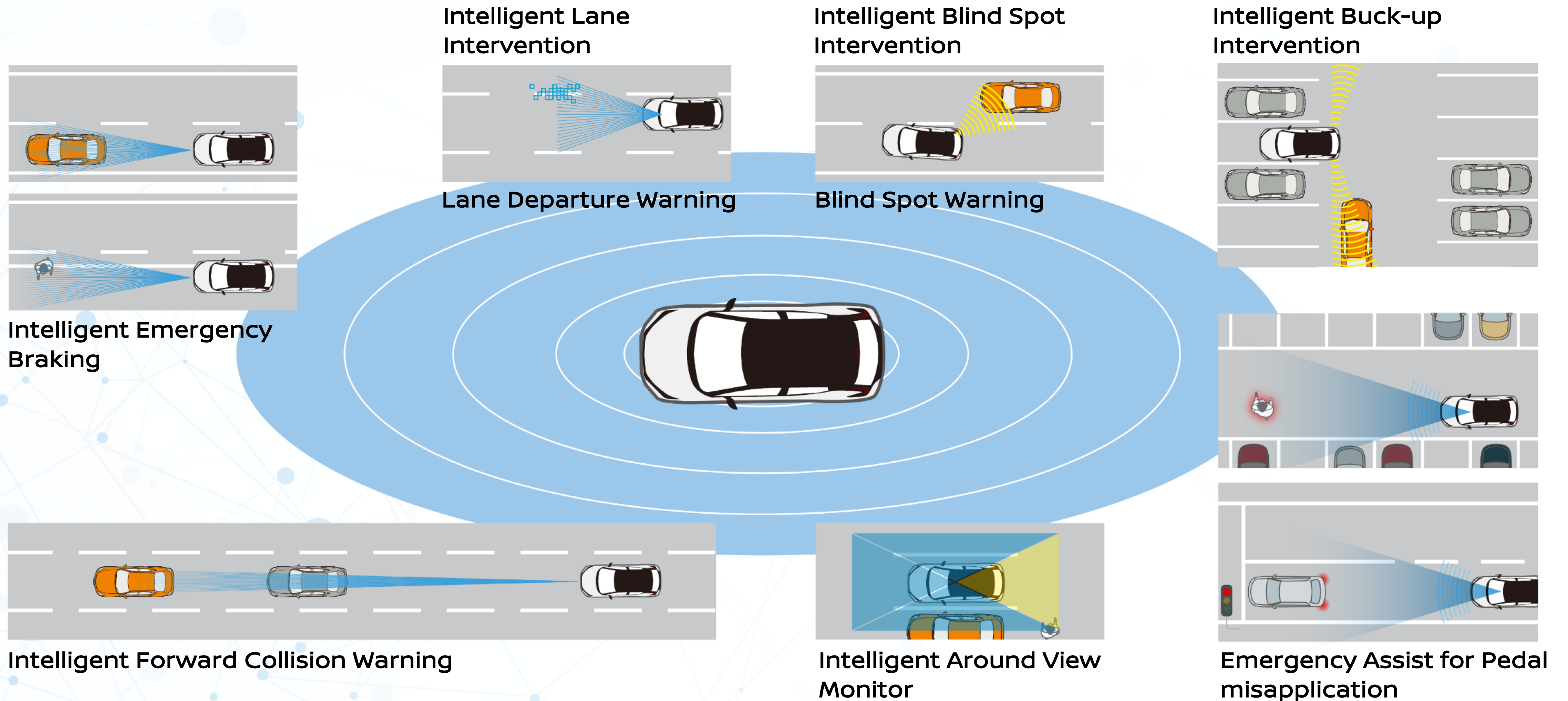
ProPILOT
Park



ProPILOT
Remote Park

Safety shield

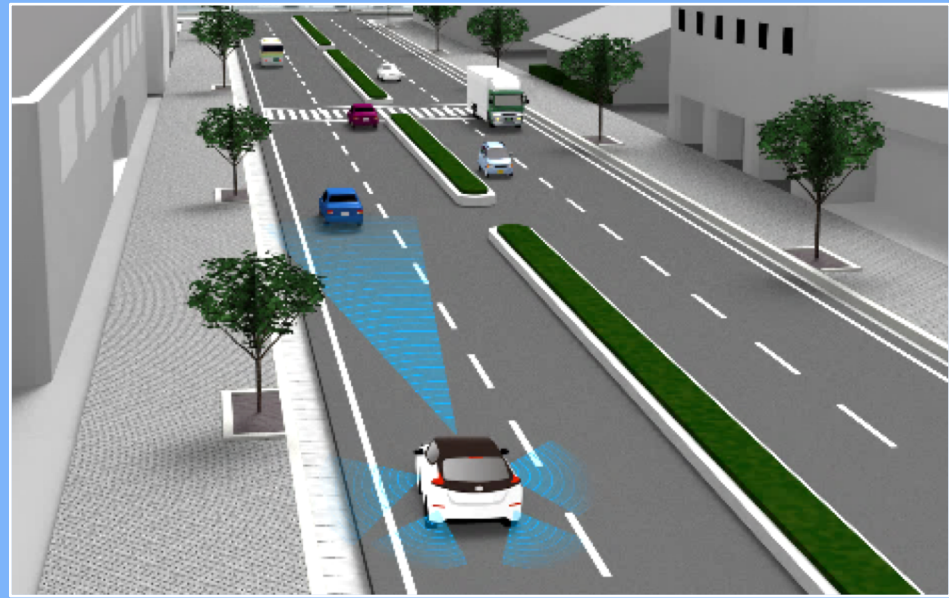
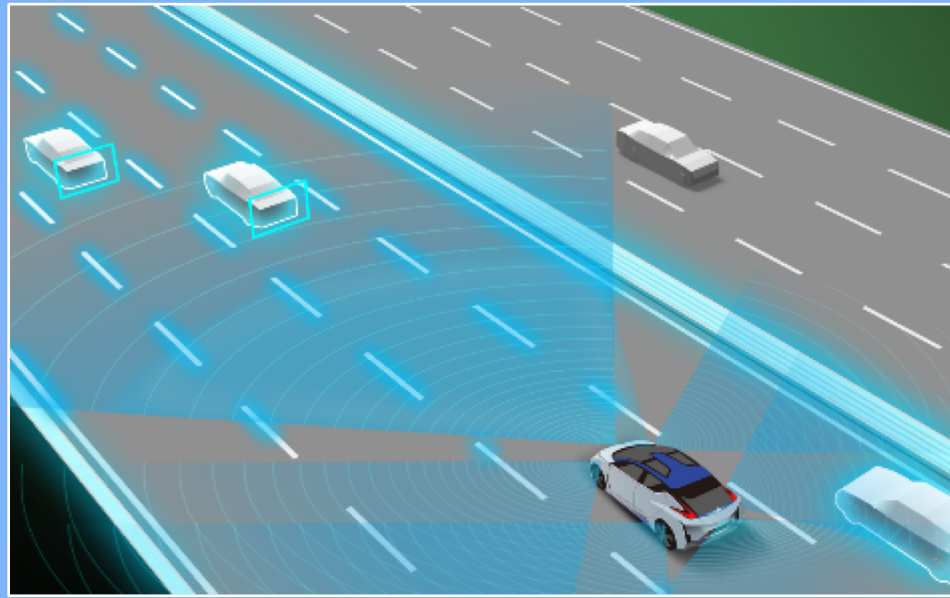
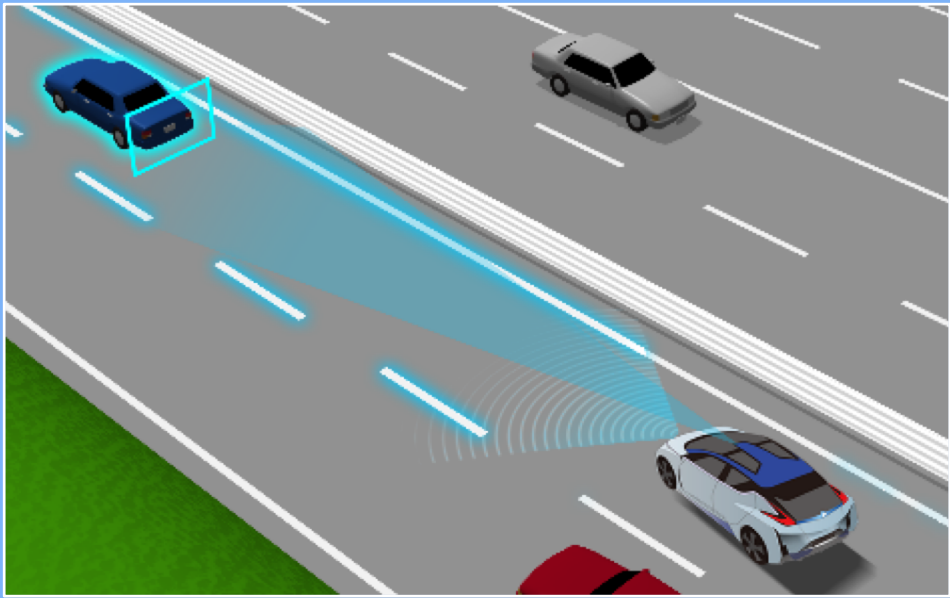
- Nissan's goal is to help avoid real-world risks of all kinds.
- Nissan keeps refining its 360-degree risk avoidance capability while expanding the variety of vehicles equipped with these innovations.



ProPILOT development concept

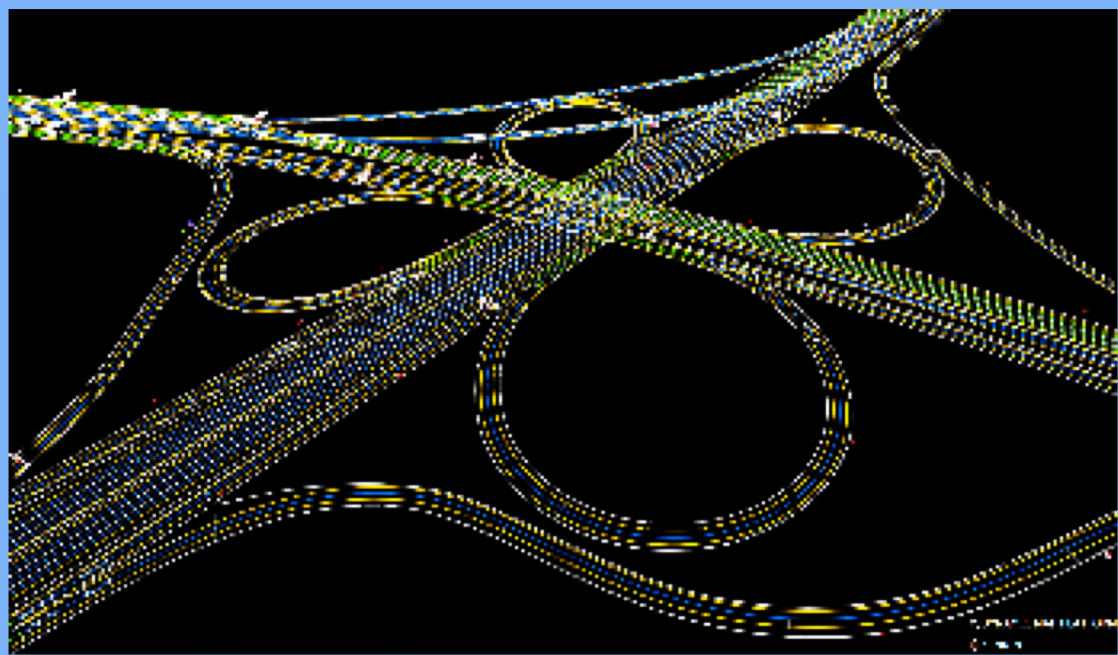
Wide range of scenes

Innovation-driven expansion of scenes



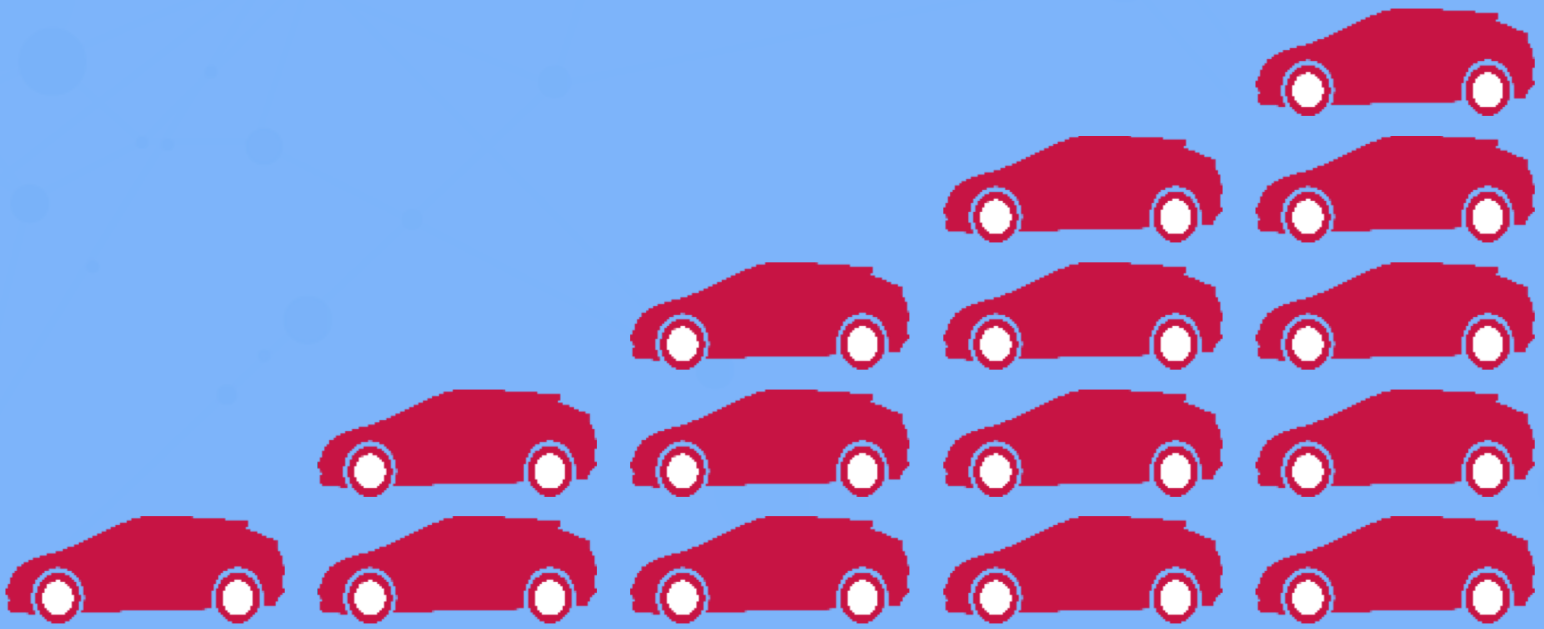
More confident

Safe, secure stress-free driving



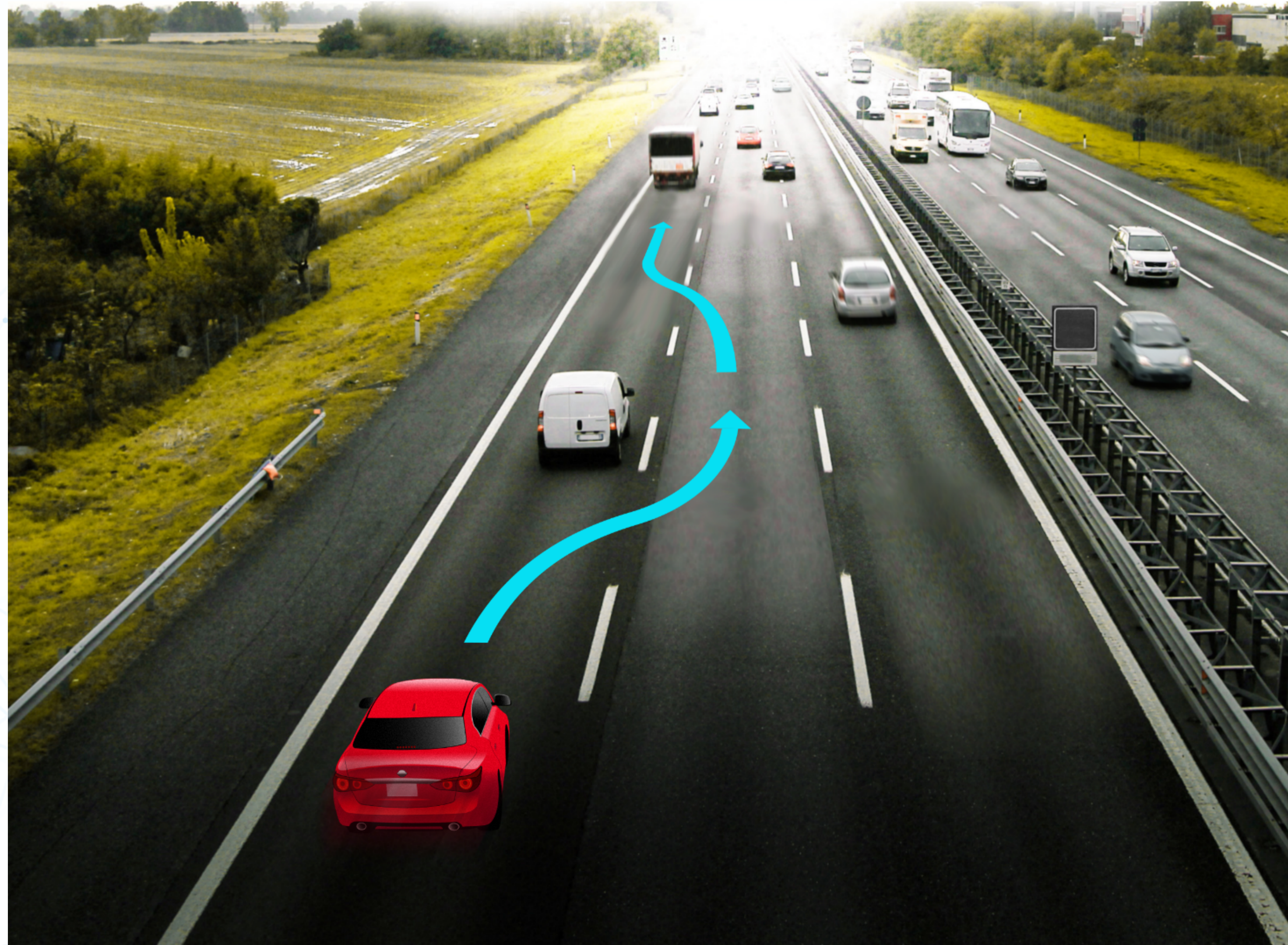
Reaching more users

Expansion into more regions and models



ProPILOT 2.0

- World's first intelligent navigated highway driving (by utilizing 3D high definition map data)



ProPILOT 2.0

- World's first intelligent navigated highway driving system with hands-off single-lane driving.
- 360-degree sensing and 3D high definition map data enable this with precise vehicle control.
- Intelligent interface enhances trust.

Hands-off single-lane driving



Navigated multi-lane highway driving



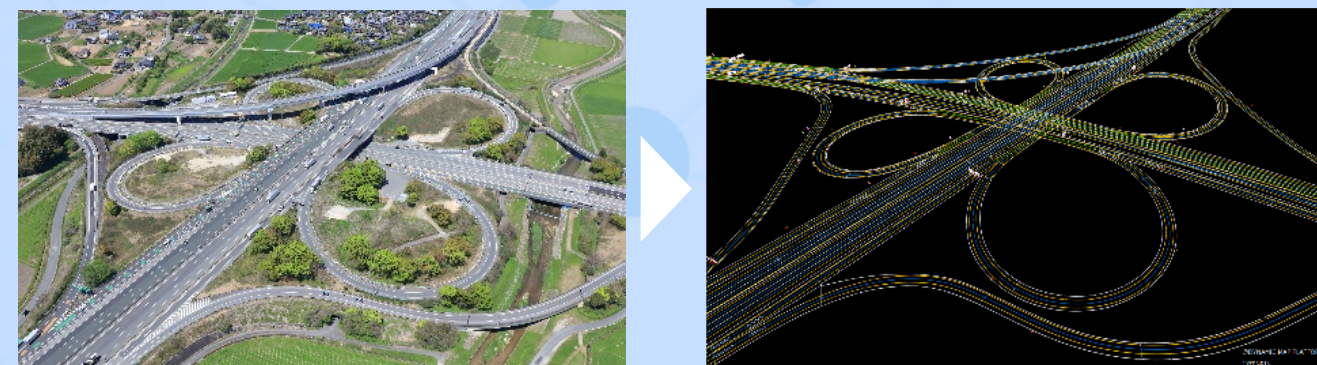
Assists with lane changes and highway exiting



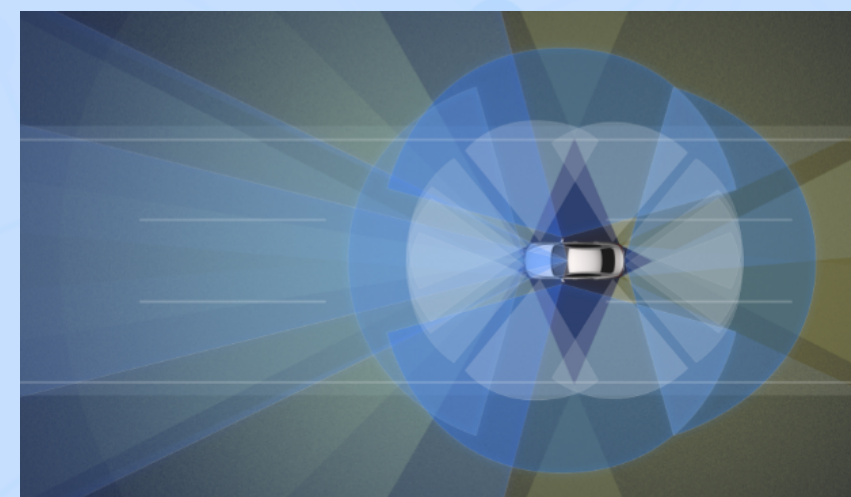
Assists with vehicle passing

Technology

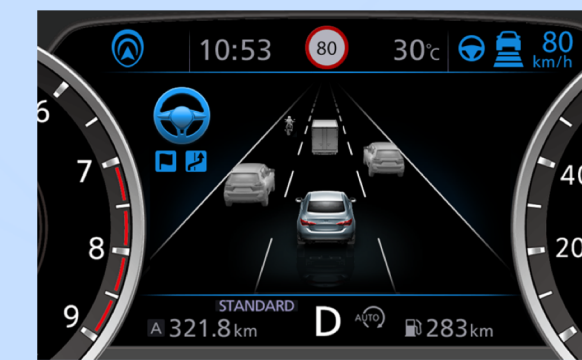
3D high definition map data



360-degree sensing



Intelligent interface

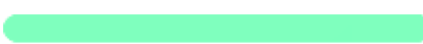




Meter display



Driver monitoring system

Navigated highway driving function

-  Navigated highway driving available
-  Highway
-  Local road



Hands-off single-lane driving



Assists with vehicle passing



Assists with lane changes and highway exiting

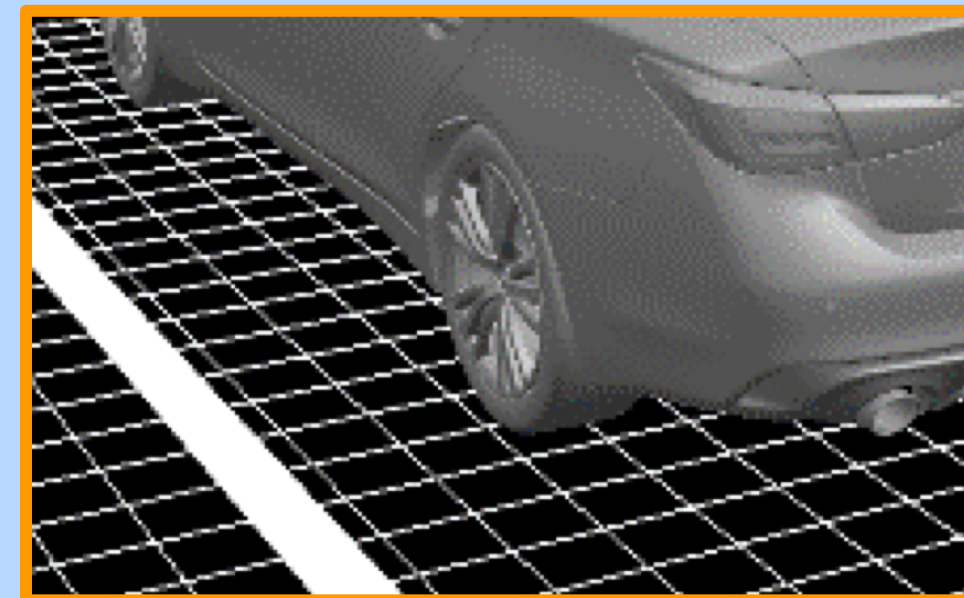
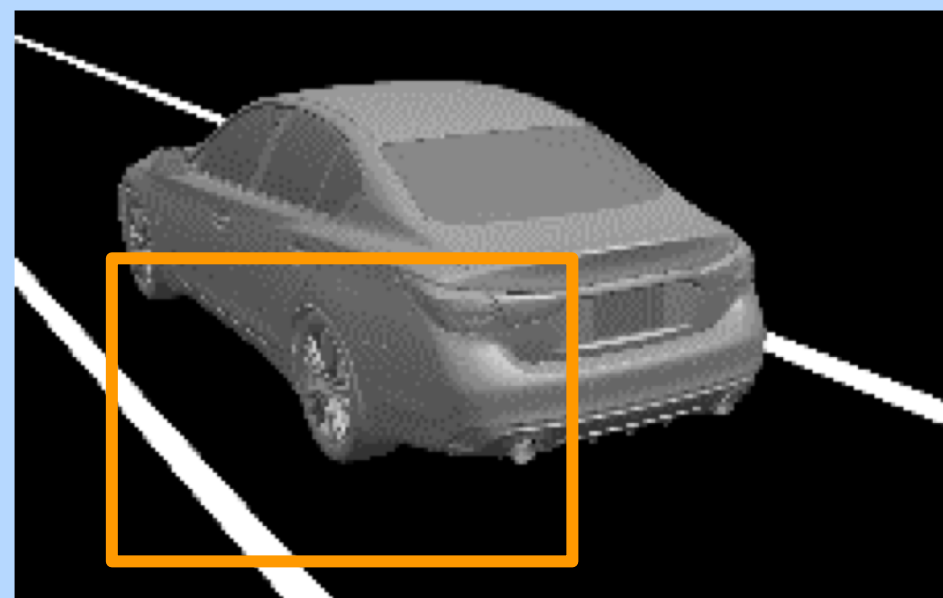


End

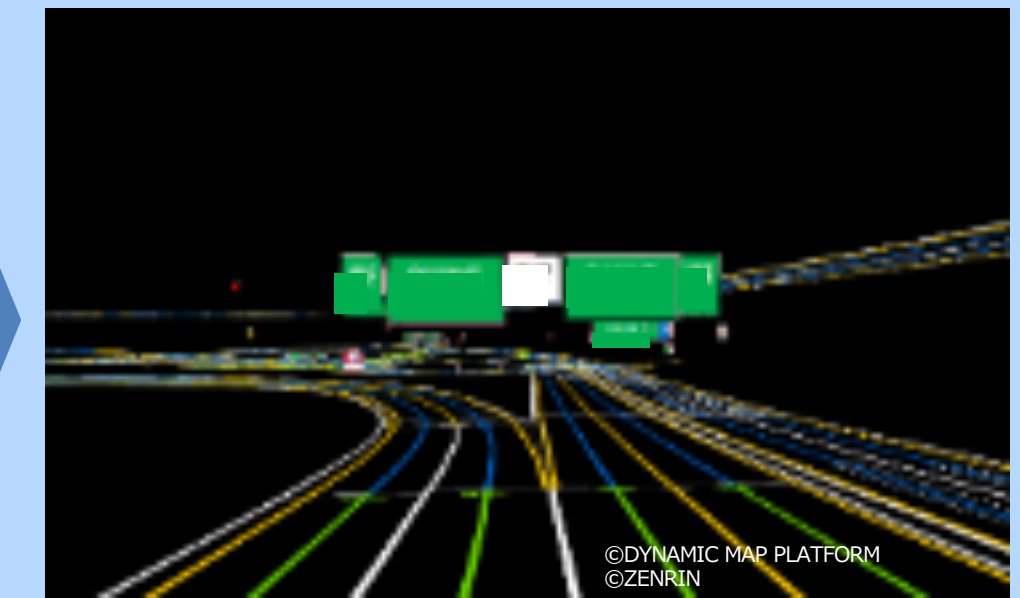
3D high definition map data

3D high definition map data consists of highway road structure information at the centimeter level. This data includes: curvature, slope, cant, lane divider, speed limits and signage.

- Highly accurate steering control and smooth speed control

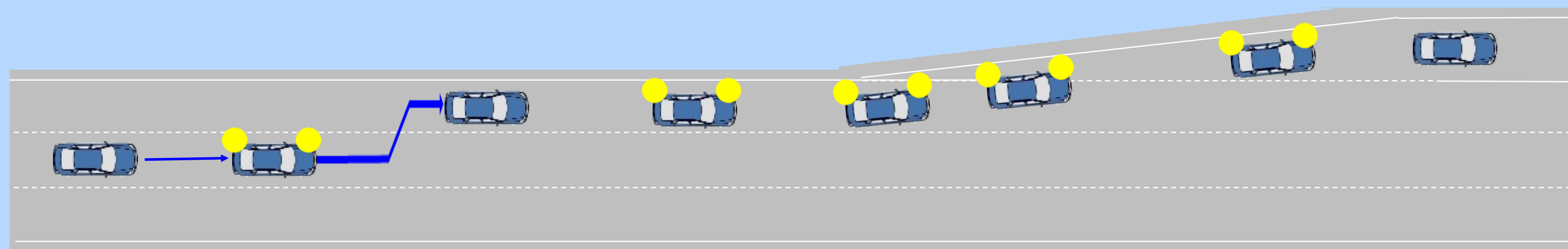


Tracking precise position on the road at all times



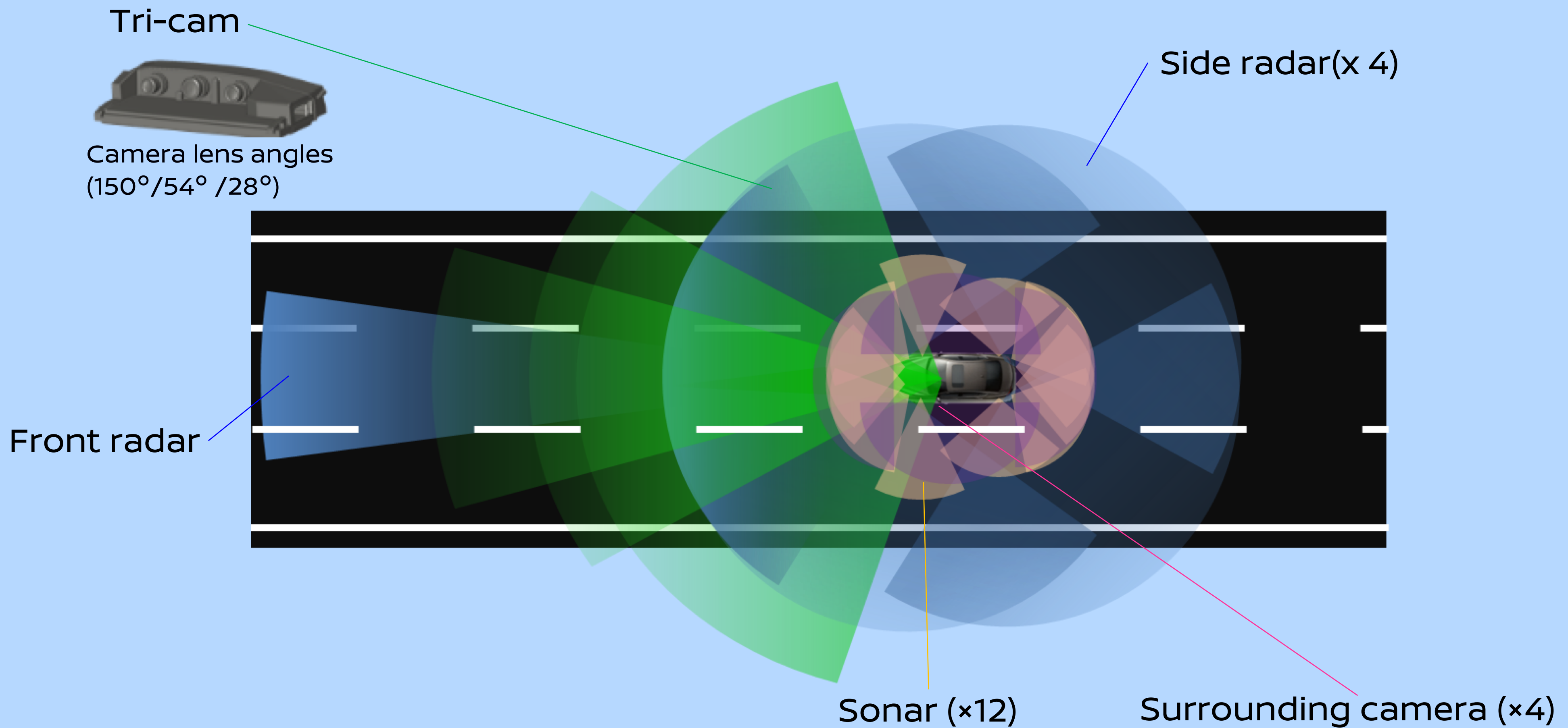
Curves in the distance can be anticipated before the camera sees them

- Complete information about all lanes enables navigated highway driving



360-degree sensing

Detects lane markers, signs and surrounding vehicles using 7 cameras, 5 radar sensors and 12 sonar sensors

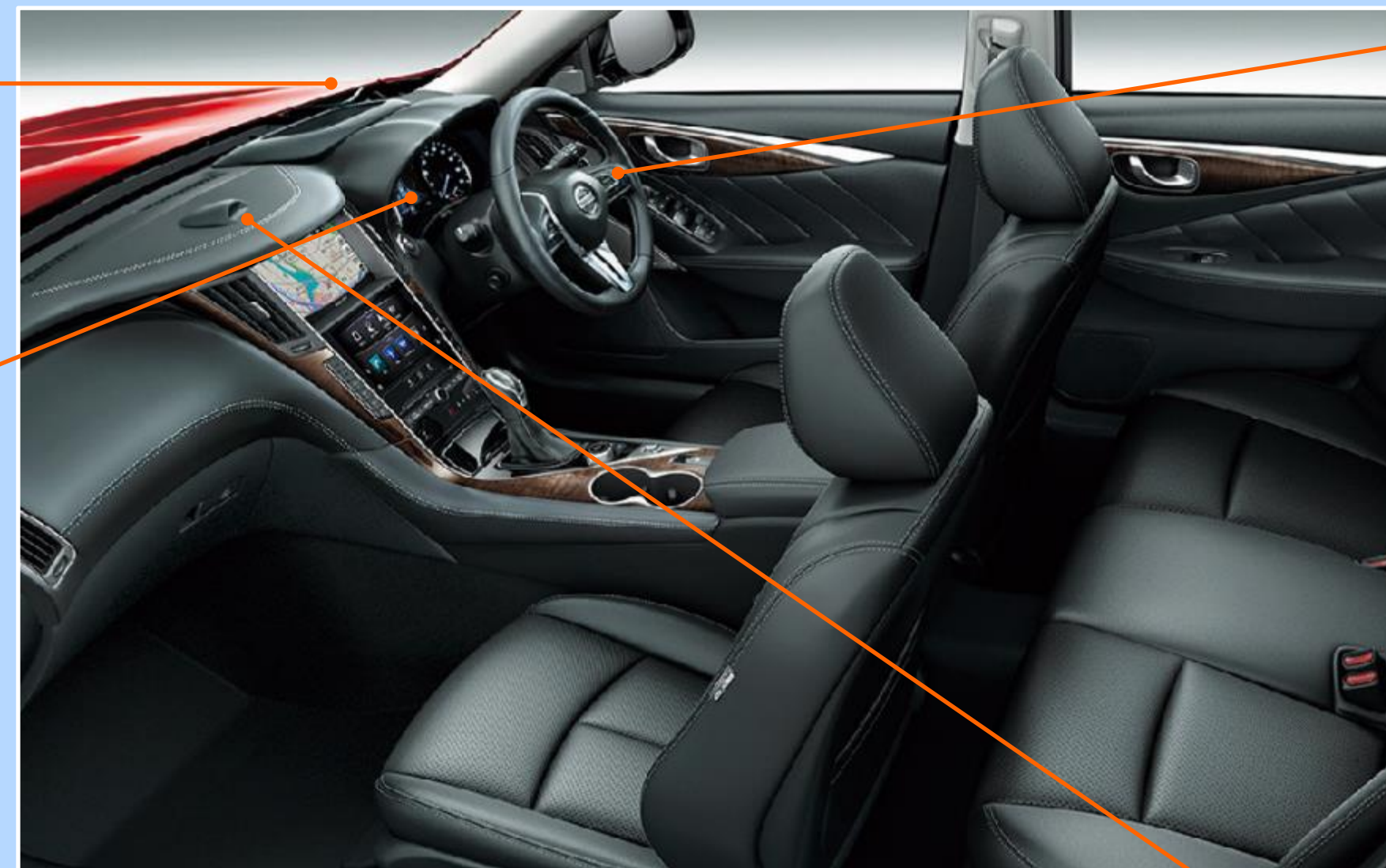


Intelligent interface

Assesses the road, surrounding conditions and system control in real time and determines lane change timing interactively



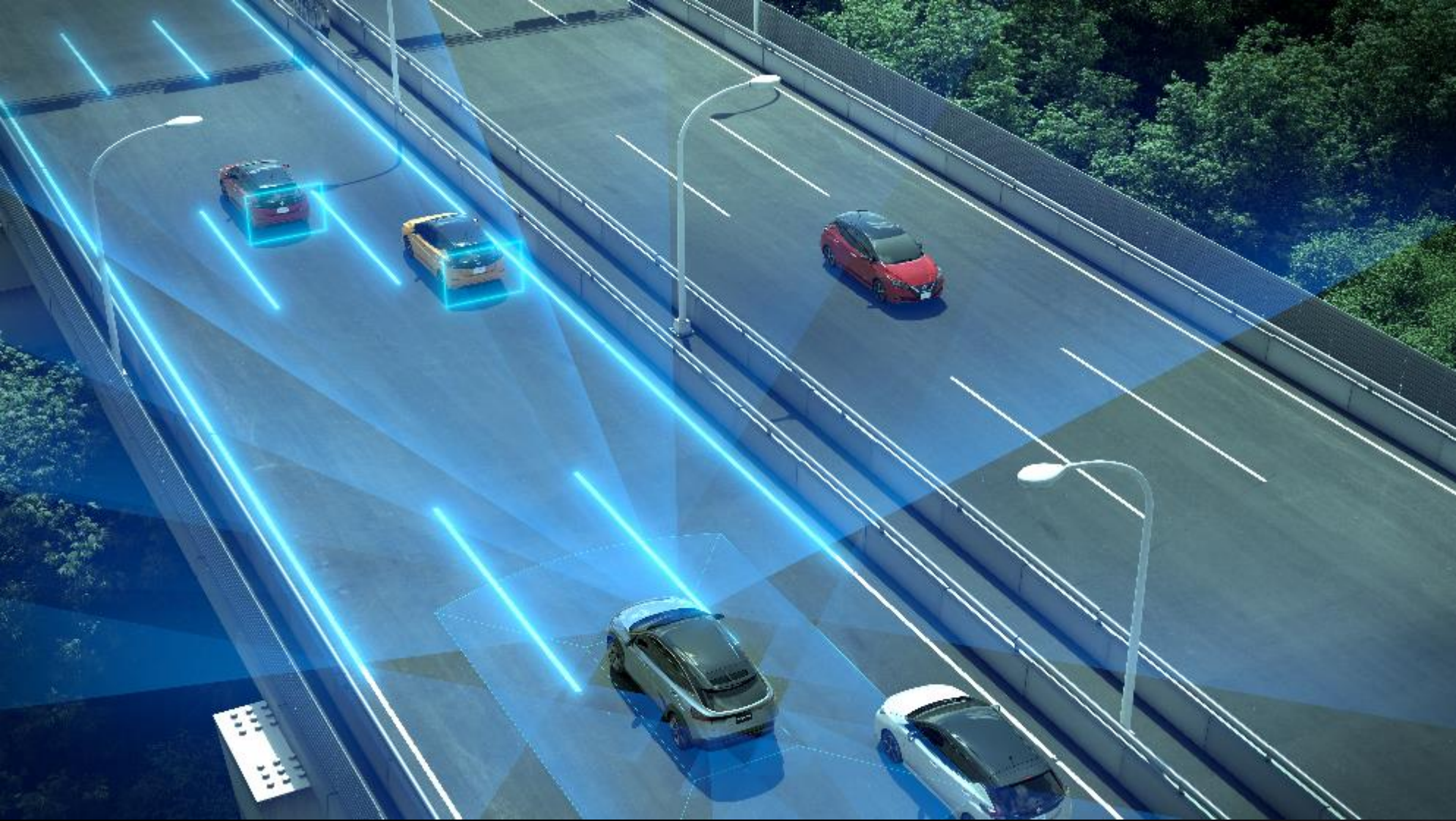
360-degree sensing information is displayed in real time



System suggests lane change timing by using map data and traffic conditions. Lane change assistance is initiated when the driver approves by pushing a switch



Driver monitoring system continually confirms the driver's attention is on the road



ProPILOT 2.0



ARIYA Concept

ProPILOT Remote Park



The logo features the word "NISSAN" in a bold, black, sans-serif font. To its right is a square icon containing three blue curved lines. This is followed by the word "INTELLIGENT" in a smaller, black, sans-serif font, and finally the word "MOBILITY" in a large, bold, black, sans-serif font. The entire text is centered horizontally against a background of a light blue network of nodes and lines.

NISSAN  INTELLIGENT **MOBILITY**