

For all  
ages!

日産デザイン

わくわくスタジオ

Nissan Design "Waku Waku" Studio

Special ★ Coloring Sheets

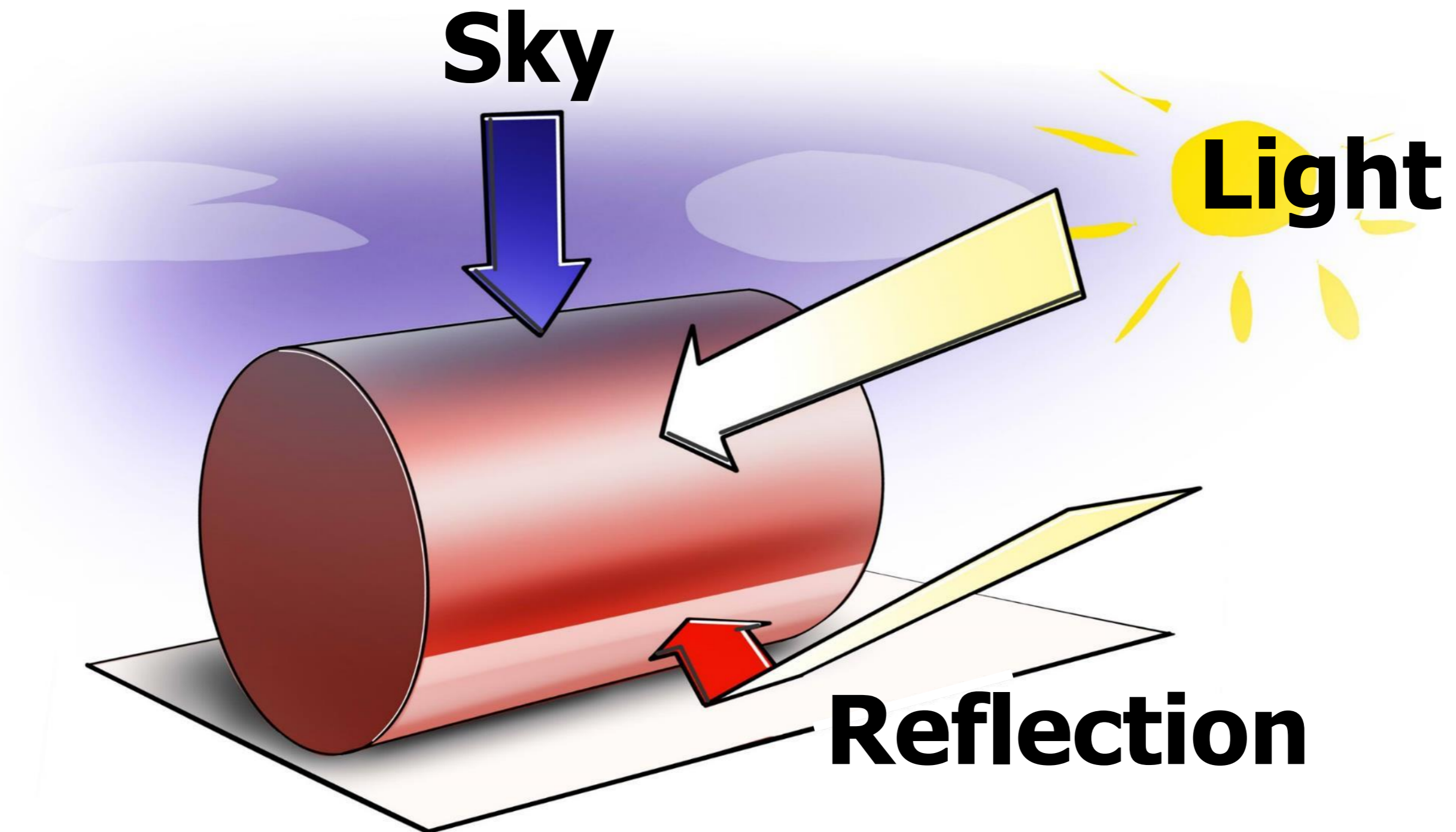
**Want to color like a pro? Nissan designers will show you how!**



**NISSAN IMk**

# How pros do it: What is “reflection rendering”?

Anything that reflects light – like a car – always have some reflections of the surrounding elements on the surface. When designers draw cars, they do so in a way that the colors of things like the sky, the sun and the roads are reflected on the body surfaces so that the drawing of the car looks three-dimensional.



# Tools: What professional designers use

## Three basic tools



### Markers

They come in many different colors and shades and are easy to color evenly and quickly. Markers for professionals can be found at art and hobby stores. You can also find them at Japanese "100-yen stores," too. To start, try to get three markers of the same color but in different brightness levels.



### Coloring pencils

Coloring pencils are used to draw rough sketches, as well as for adding details and shine to the drawing. They can be very versatile because infinite shades of colors can be created once you learn the right technique and by taking time coloring. Dark blue pencils are often used to draw rough sketches.



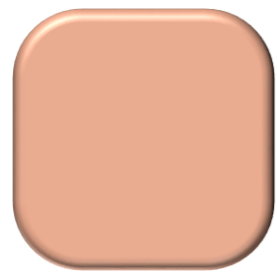
### Pastels

Like coloring pencils, pastels are used to create soft and rich expression by adding the color little by little to the sketch. Used together with markers, photo-realistic expression can also be achieved. Use a knife to shave off a little bit of the pastel to make powder and mix with baby powder to color. You can also find them at Japanese "100-yen stores."

# Start coloring: Using just three markers to make it look 3D!

Use three markers of the same color in different shades. Take some time to color nicely, and you can create a cool, three-dimensional look!

**Use three markers of the same color in different brightness levels**



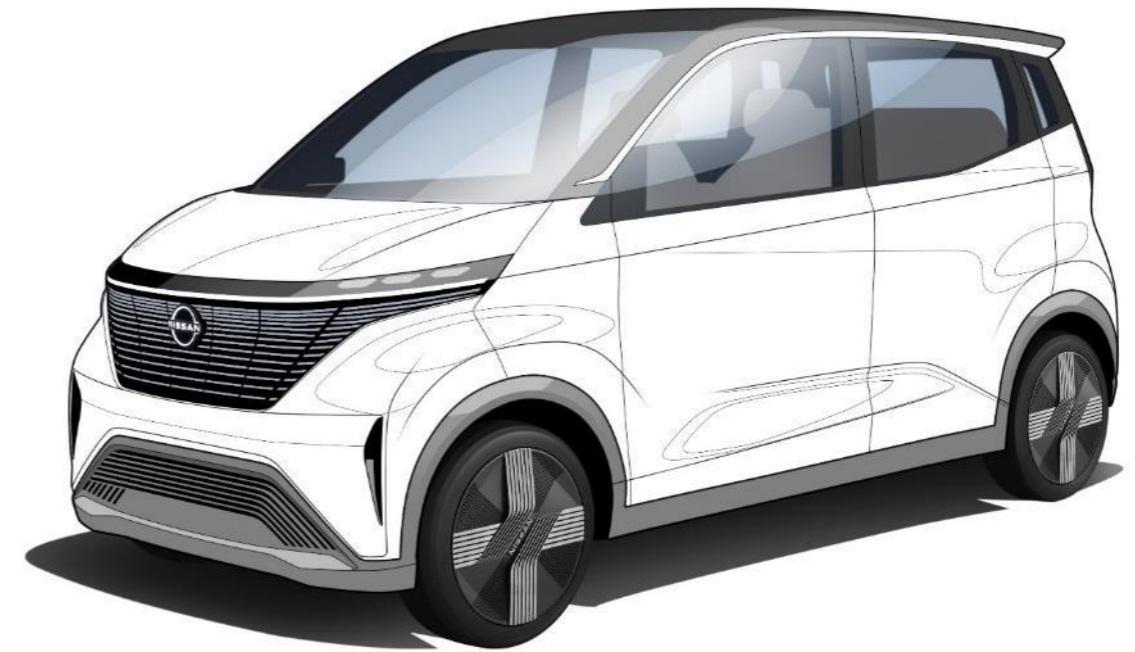
Light



Medium



Dark



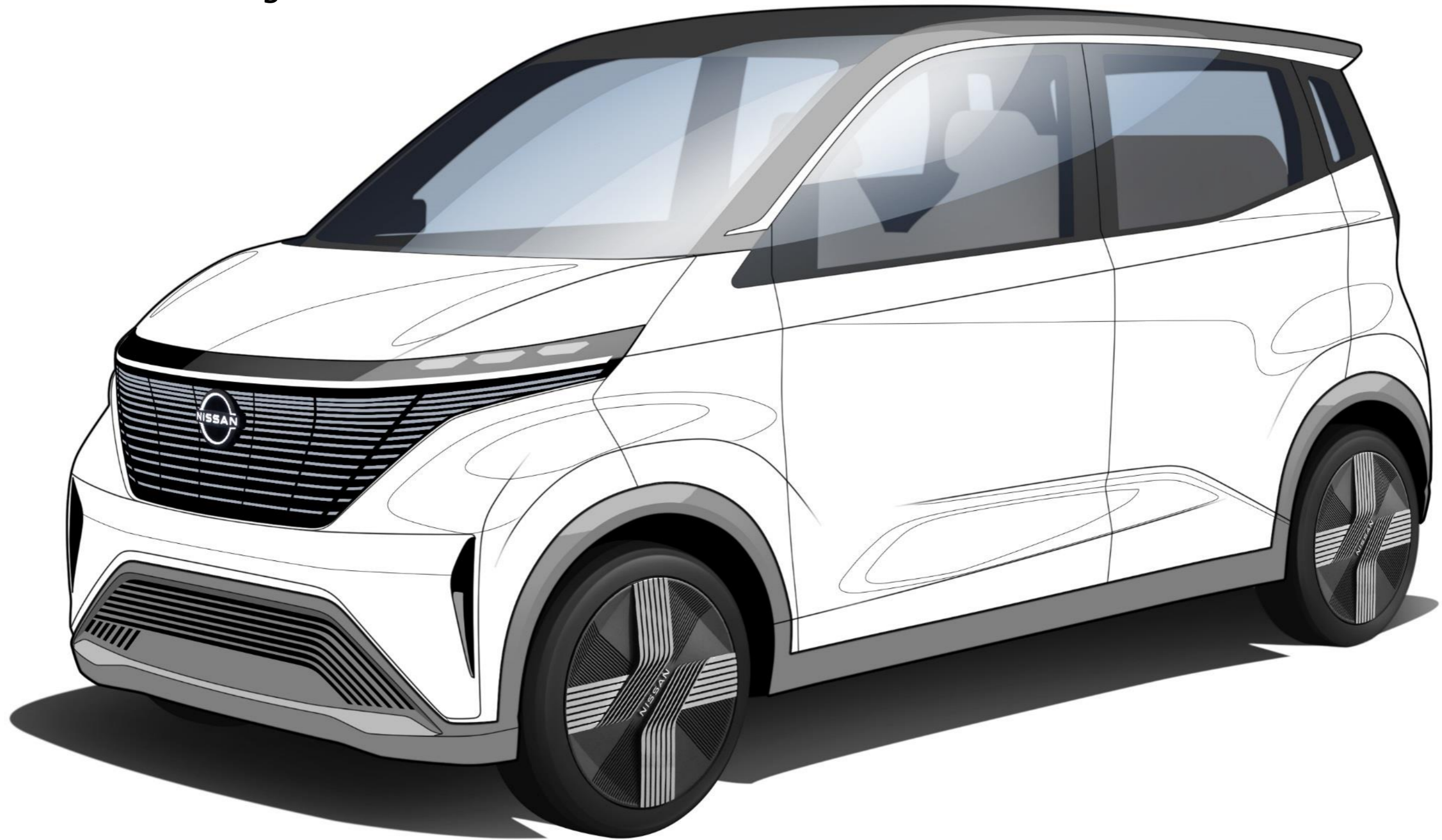
**Coloring sheet (with color separations)**



**Completed image (sample)**

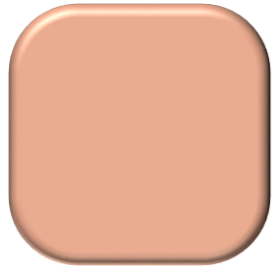
# Are you ready?

Here's Coloring Sheet. Lines for different color areas are already drawn on the car. Use one marker at a time and start coloring!

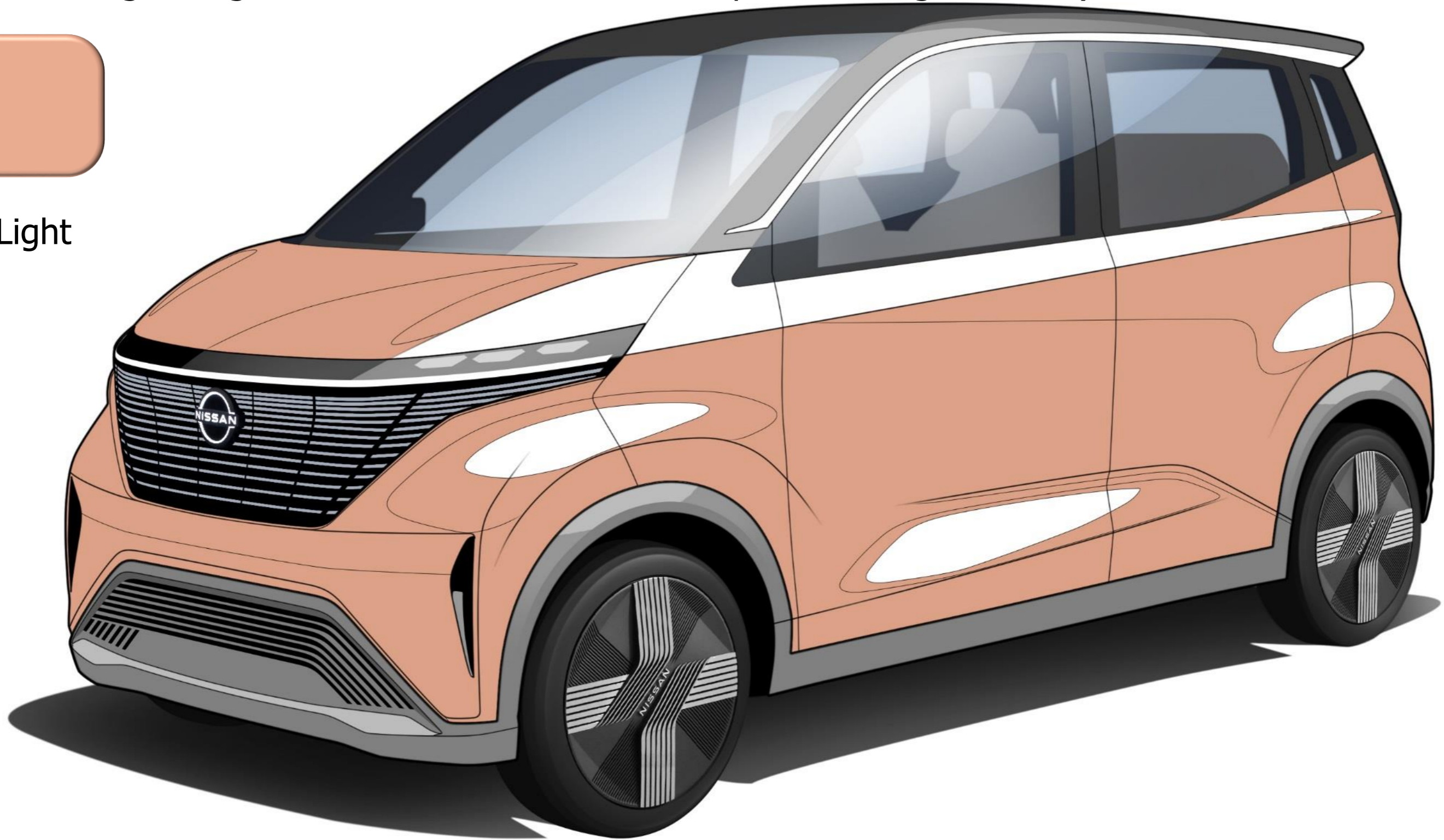


# ① Start with **the lightest** color!

Go ahead and make big hand movements to color! It's OK if the color goes outside of the line a little bit. (We are using the lightest color because these are upward-facing surfaces.)



Light



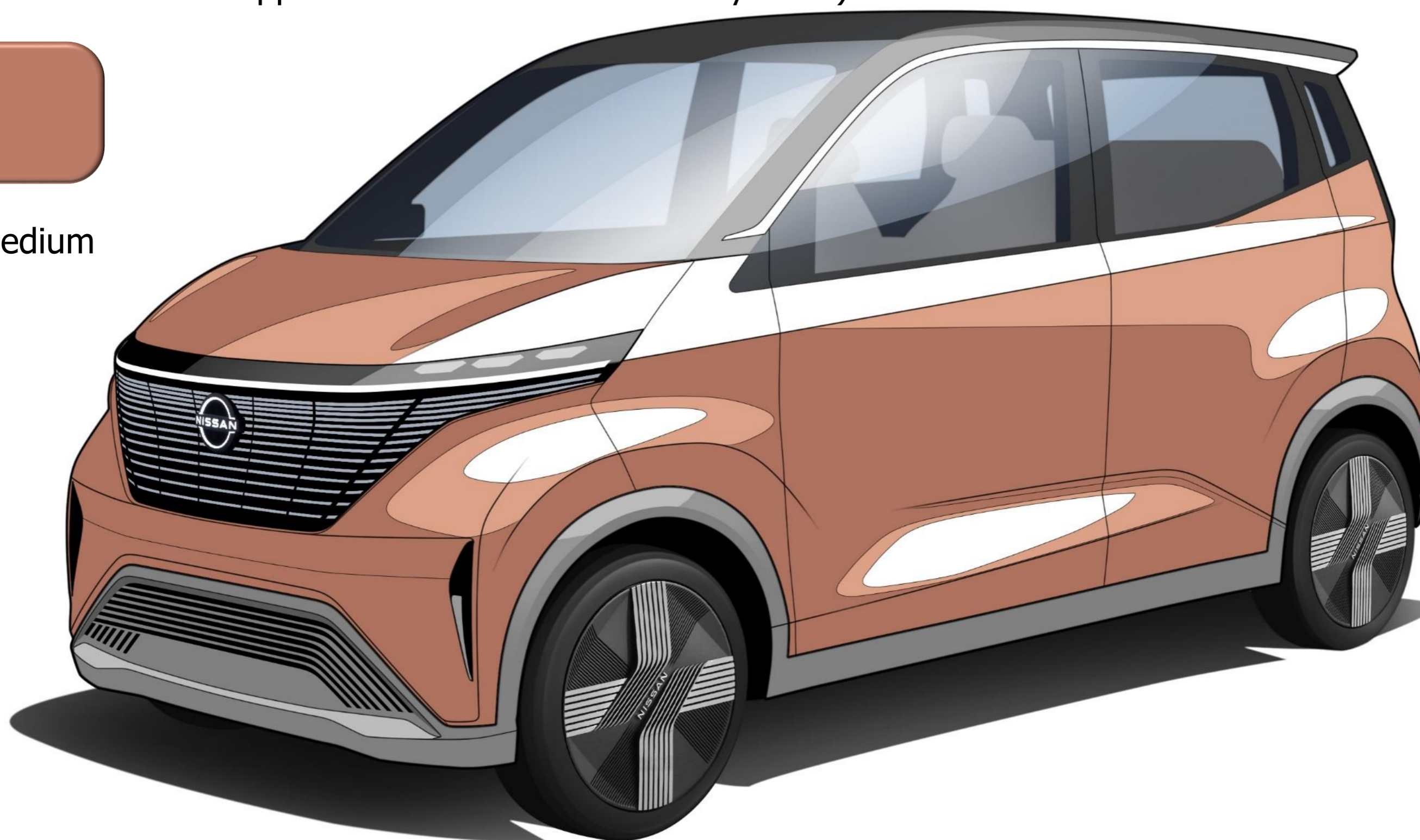
Leave the white areas white!

② **Next, use the **medium** color!**

Color the shaded area on the coloring sheet with the medium-color marker.  
(These areas are supposed to be the intended body color.)



Medium



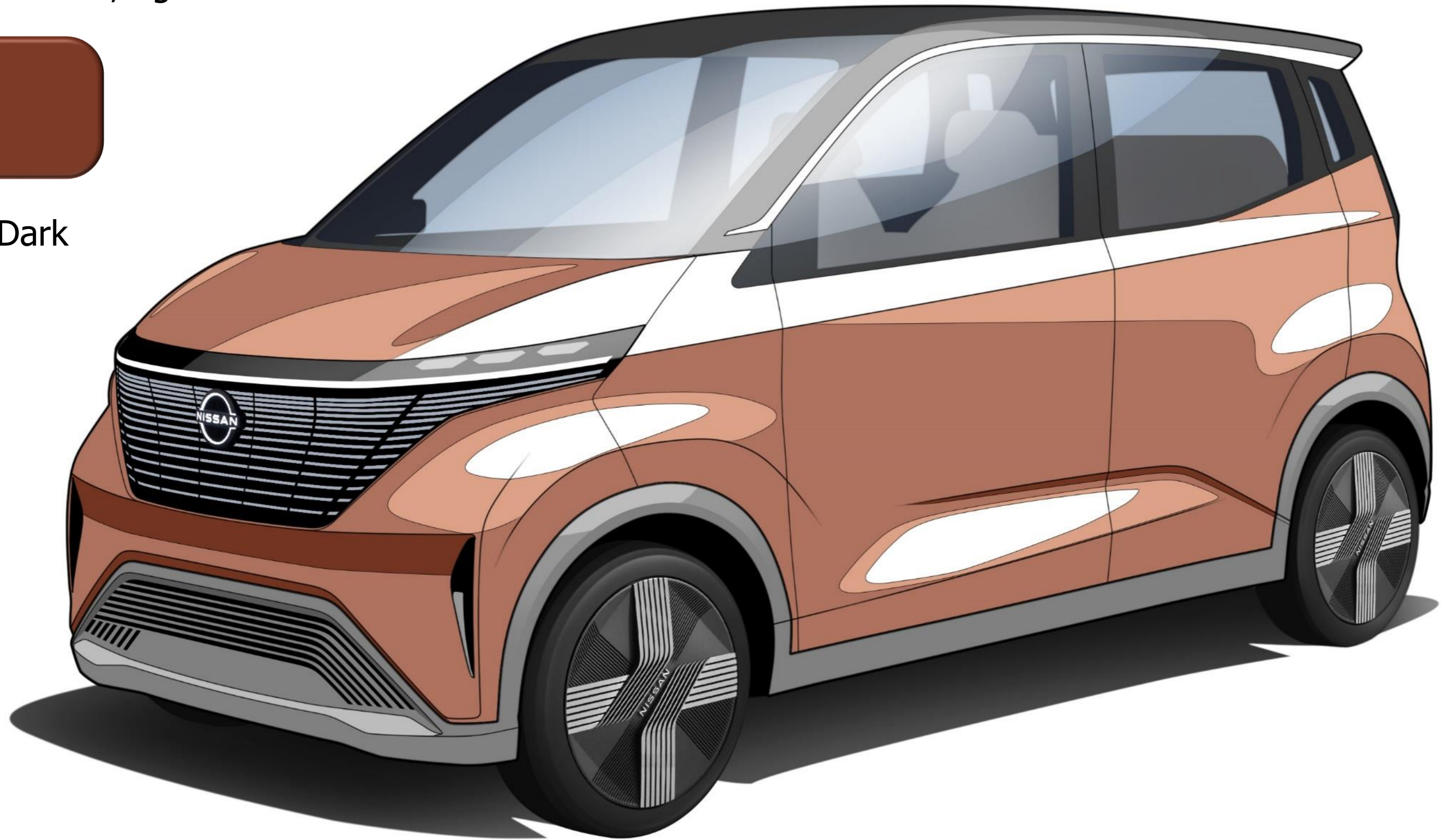


### ③ Finally, use **the darkest** color!

The darkest color is used to color the surfaces that are facing down. It's starting to look kind of three-dimensional, right?



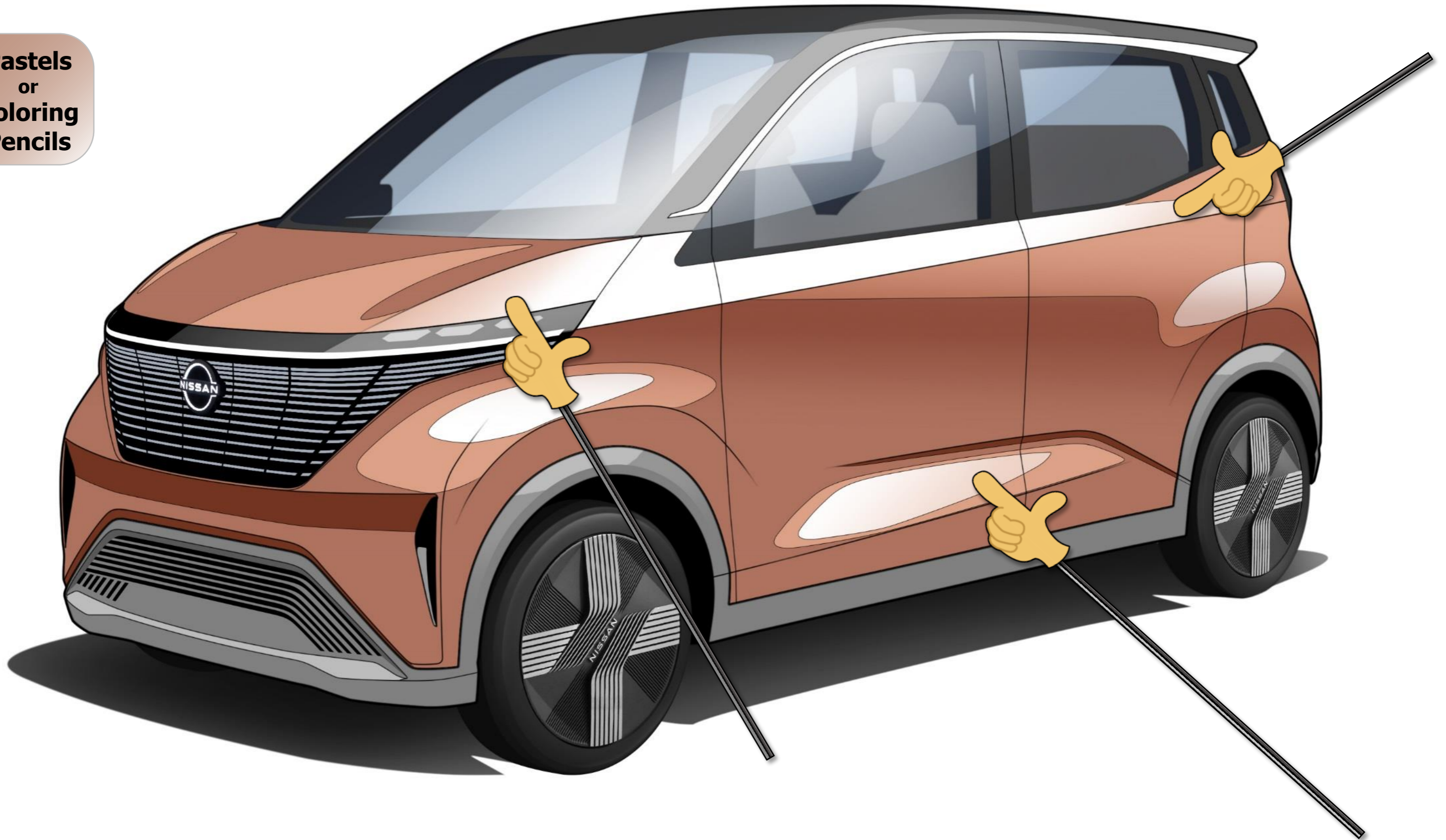
Dark



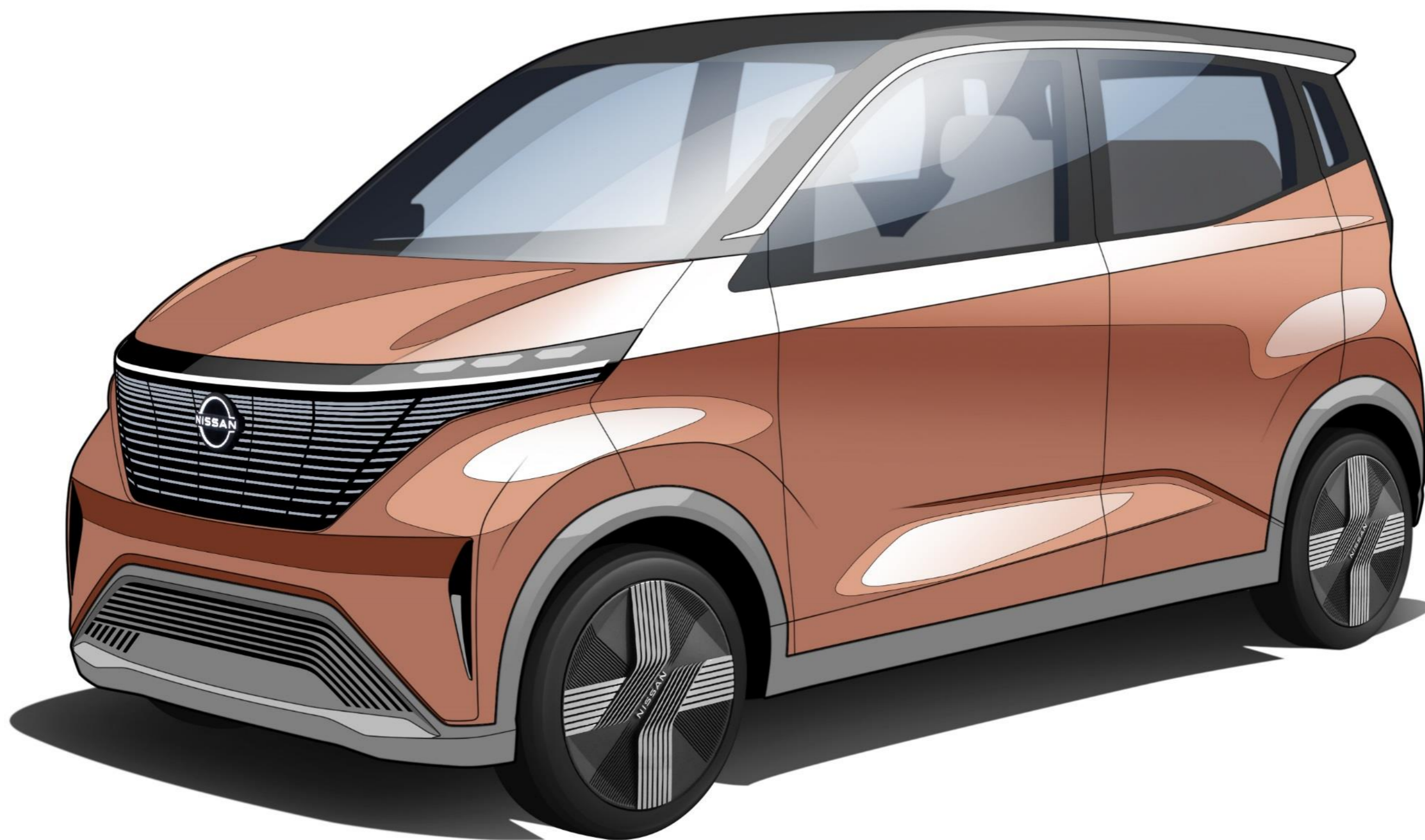
## ④ Apply the lightest color **softly** on the colored surfaces.

Use coloring pencils or pastels to apply more color over the drawing already colored in with markers. The image will look even more realistic!

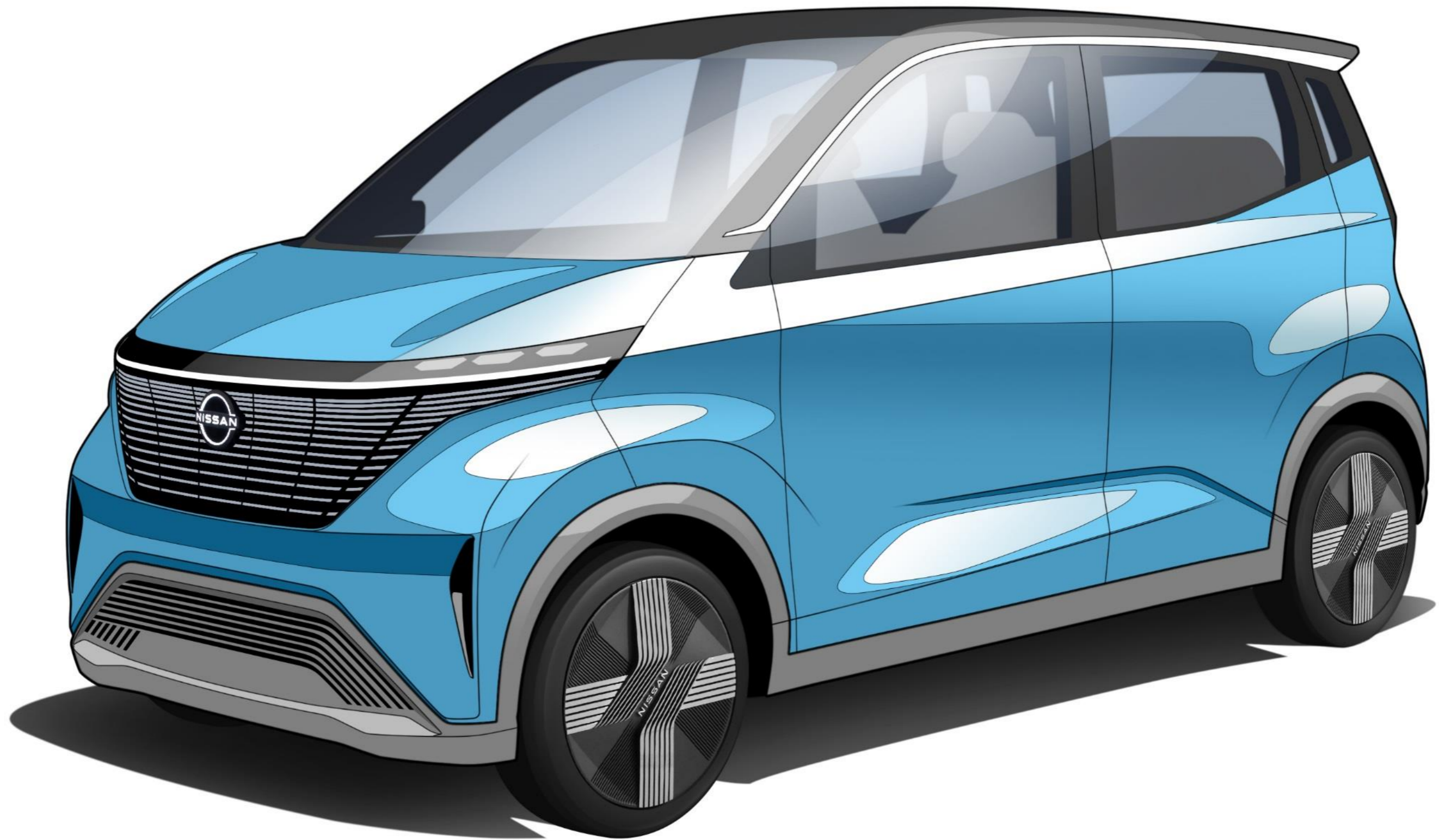
Pastels  
or  
Coloring  
Pencils



⑤ Done!



**Let's try another color!**



**Print out the next pages  
for coloring sheets and samples!**

