



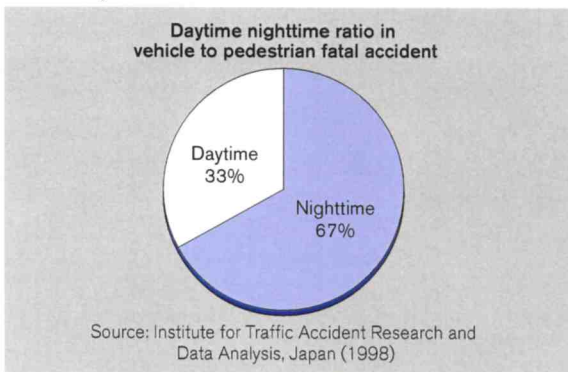
Adaptive Front-lighting System (AFS)



Many fatal accidents involving collisions with pedestrians occur in nighttime driving. Improving drivers' nighttime visibility can help reduce traffic accidents at night. The Adaptive Front-lighting System (AFS) featured on the Cima is an innovative technology that improves drivers' visibility in nighttime driving by automatically turning additional lamps in the direction of travel according to the vehicle's velocity and steering wheel angle. Because the direction of travel is better illuminated on curves and at intersections, drivers can more easily see pedestrians or other objects on the road ahead.

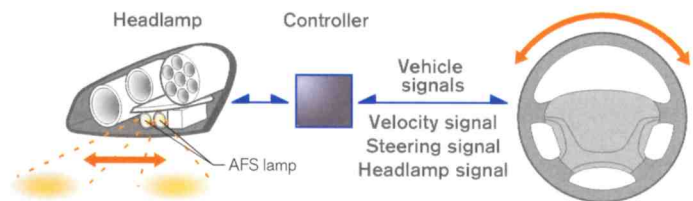
Approximately 70% of fatal vehicle-pedestrian accidents occur at night

In Japan, 67% of fatal vehicle-pedestrian collisions occur at night. Improving drivers' nighttime visibility can help reduce traffic accidents at night.



Additional AFS lamps illuminate in the direction the vehicle is turning

A controller operates motors that turn the AFS lamps in the direction the vehicle is headed when traveling around a curve or turning a corner. The lamps are mainly controlled according to vehicle signals for the steering wheel angle, vehicle velocity and shift lever position. With the direction of the low beam remaining unchanged, the AFS lamps can be swiveled up to 30° to expand the illuminated area.

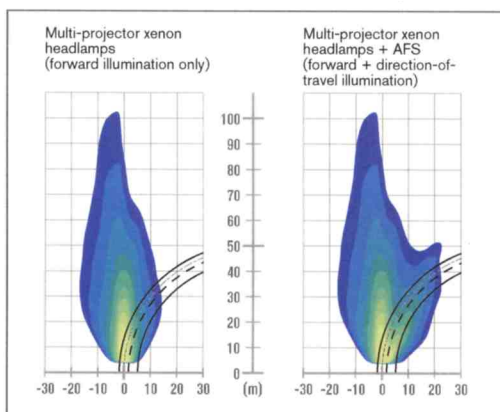


Benefits of AFS

On curves

When cornering, the AFS lamps are illuminated in the direction of travel to match the road curvature, thereby improving the driver's forward visibility.

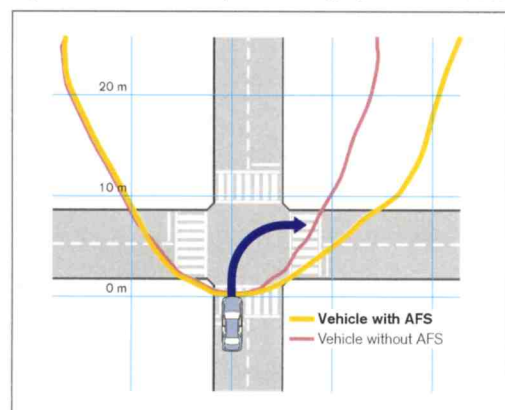
Comparison of headlamp illumination patterns (for right-hand cornering)



At intersections

The AFS lamps illuminate the direction of travel when turning right or left at an intersection, enabling the driver to better detect pedestrians or other objects in the crosswalk.

Concept of AFS illumination (when turning right at an intersection)



NISSAN MOTOR CO., LTD.

17-1, Ginza 6-chome, Chuo-ku, Tokyo 104-8023, Japan